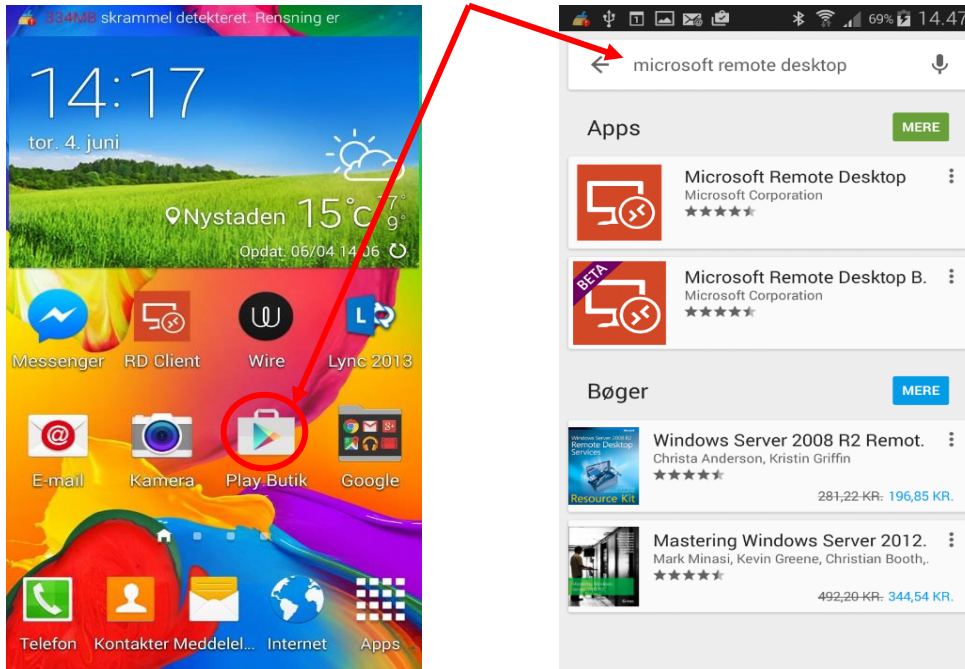
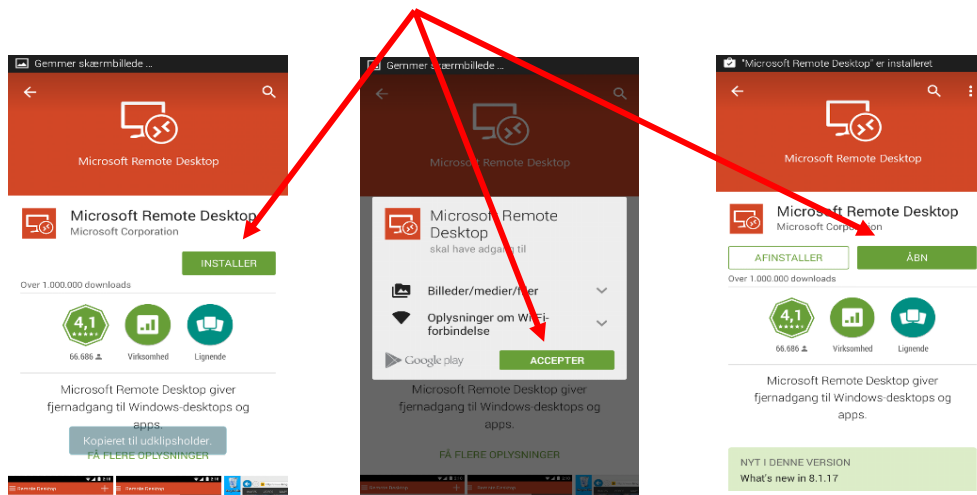


Vejledning til Terminal server på Android.

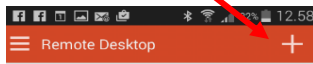
Åbn din Play Butik og skriv i søgefeltet "**Microsoft Remote Resktop**".



Tryk på "**Installer**", derefter tryk på "**Accepter**". Når programmet er installeret tryk på "**Åbn**".

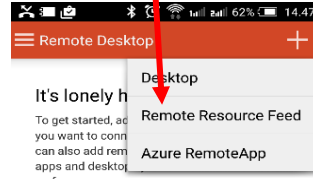


Tryk på " + " for terminal server opsætning.

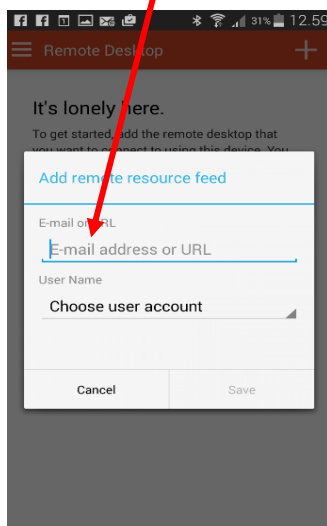


It's lonely here.
To get started, add the remote desktop that you want to connect to using this device. You can also add remote resources to work with apps and desktops your administrator has set up for you.

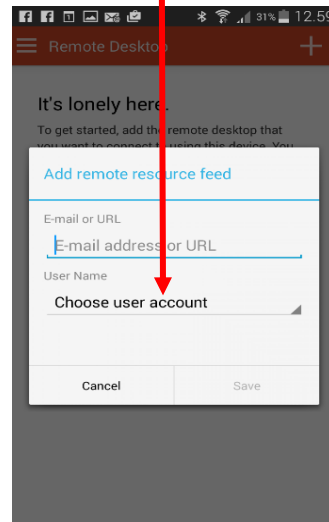
Tryk på " Remote Resource Feed ".



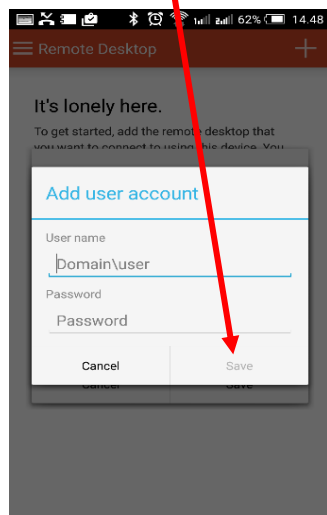
Skriv i feltet (E-mailadress or URL) "ts.itcsyd.dk"



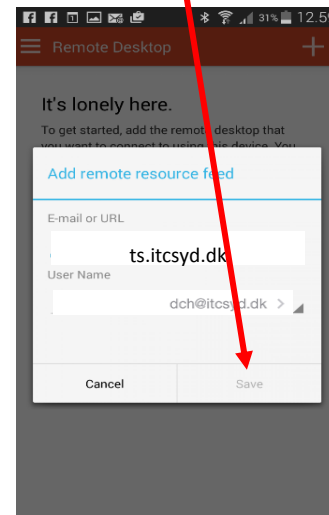
Tryk i feltet (Choose user account).



Skriv din email adresse i brugernavn og din adgangskode fra UNI-login.
Tryk derefter på "Save"

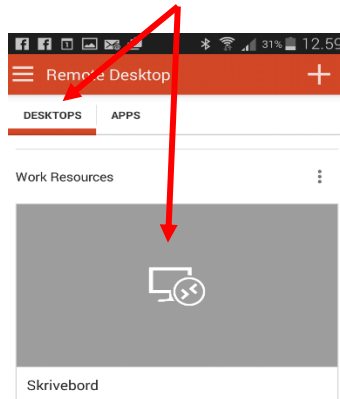


Tryk på " Save "



Du kan nu bruge dit fjernskrivebord med de følgende ikoner.

Tryk på Desktop fanen for at tilgå skrivebordet på fjernskrivebordet.



Tryk på Apps fanen for at tilgå genveje til Astrow, Easy-c med mere.

